

Customer :

customer

Customer part :

customer part

Comment :

Comment

S1=1.78

S2=1.89

Tmax=450

Tp S2=489.0

PI=0.48

HI=103

Sample =1790.80

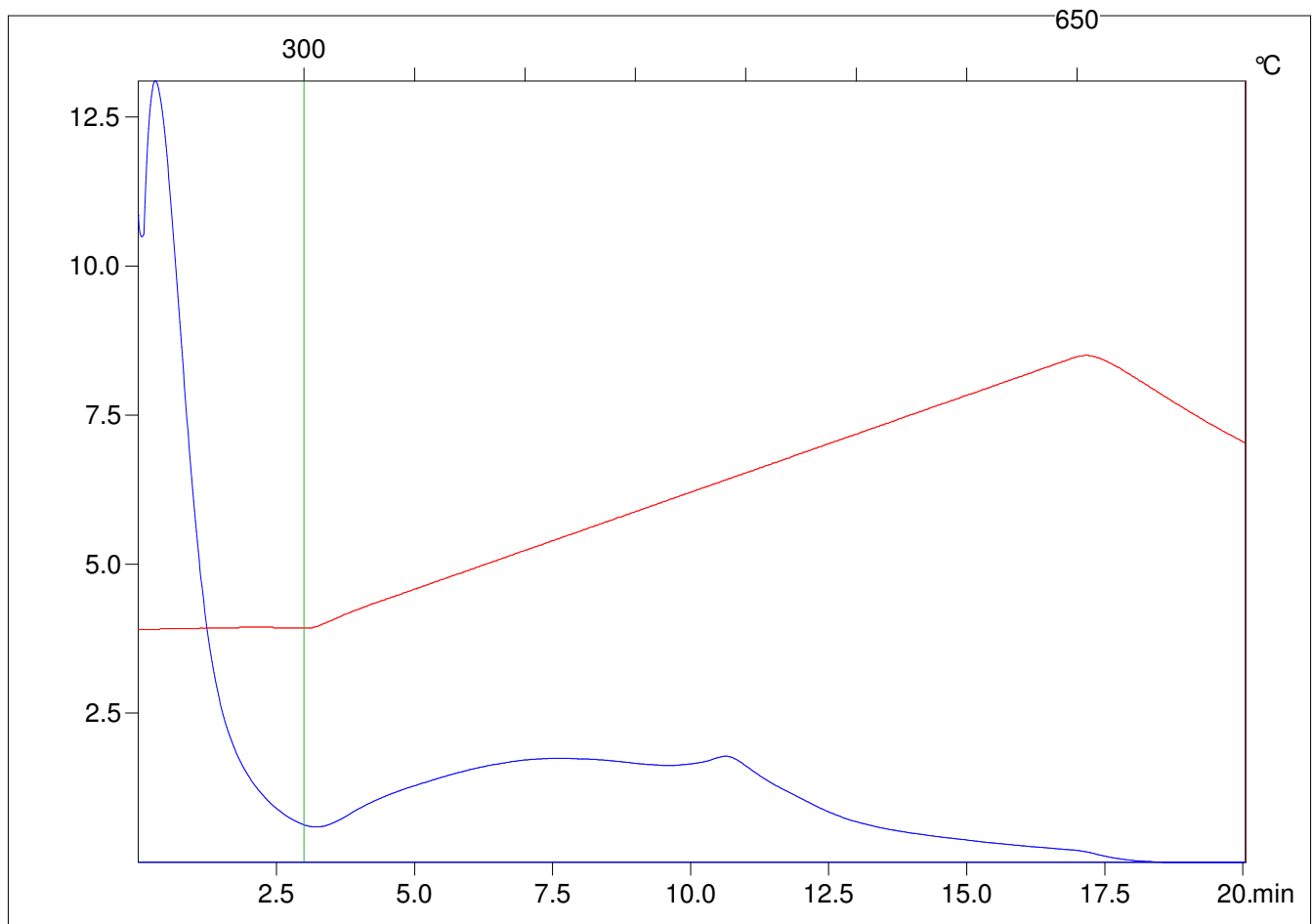
Method =Bulk Rock

Cycle=Basic

KFID(10\*9)=1444

Qty =70.7

TOC=1.84



C:\VINC\PK3\_1792\PK090.R00 : FID pyrolysis graphic

State

Pyro Status

Oxi Status